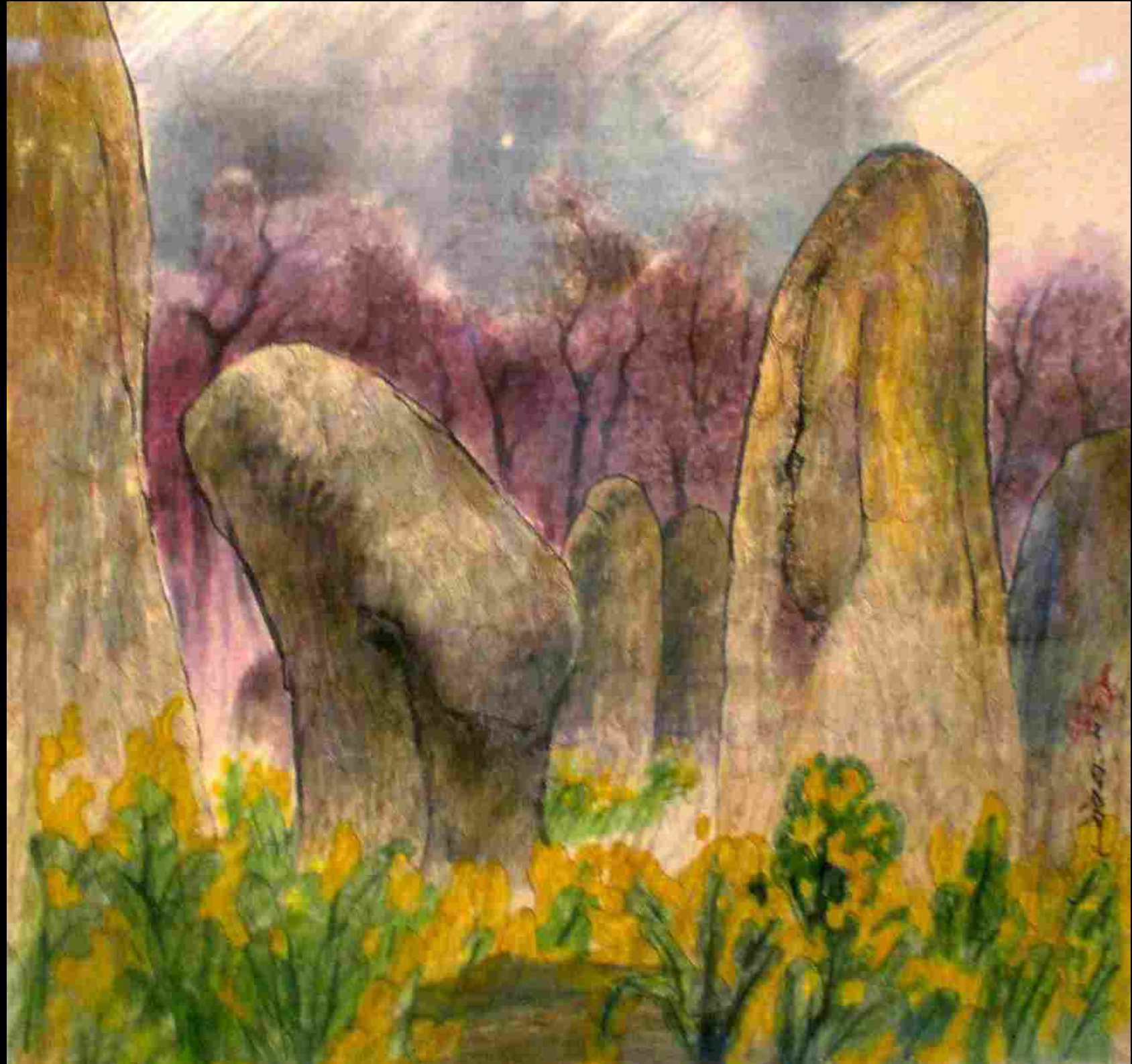




Scallop shells





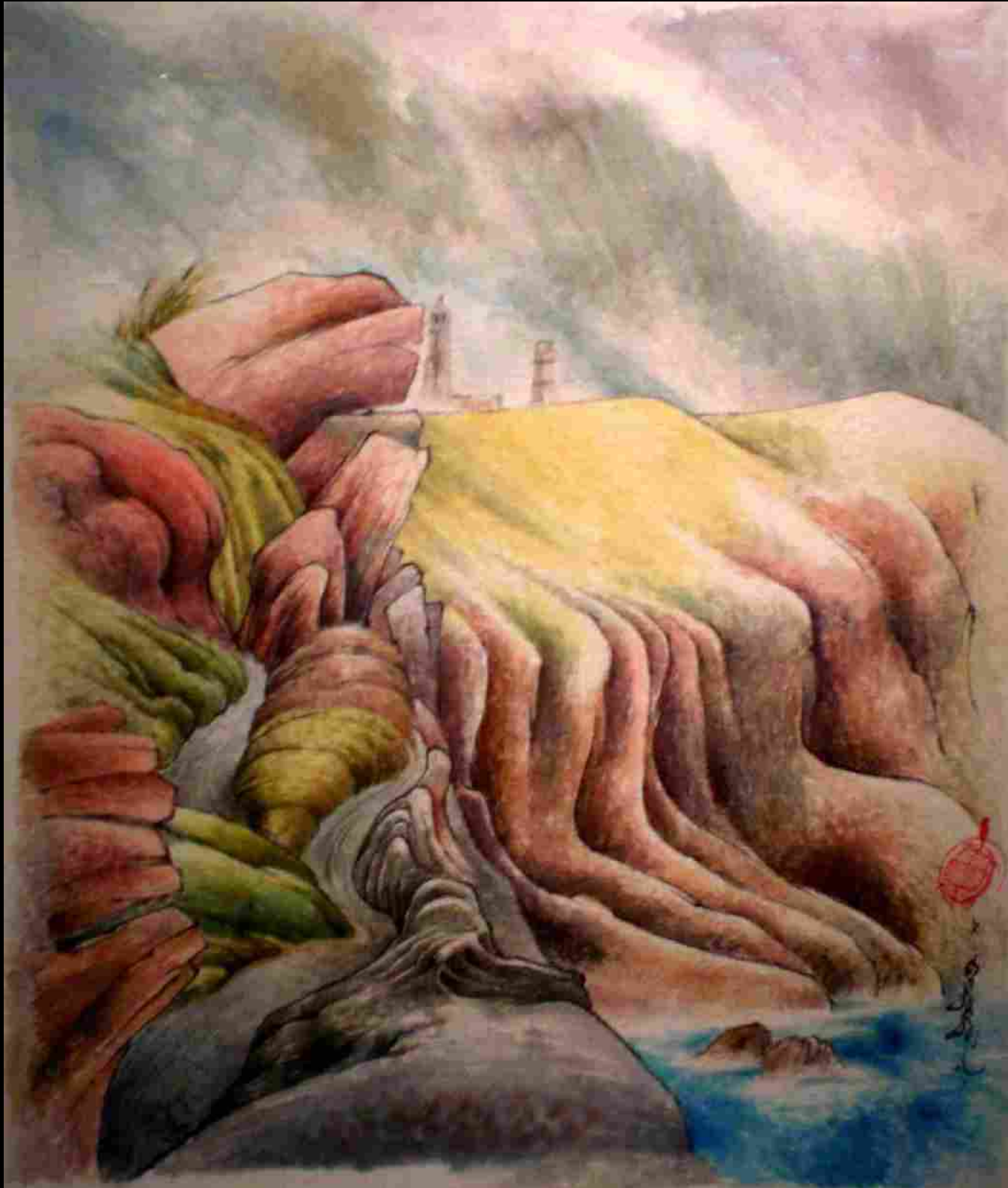
1910
W. H. H. H.



[Faint signature]

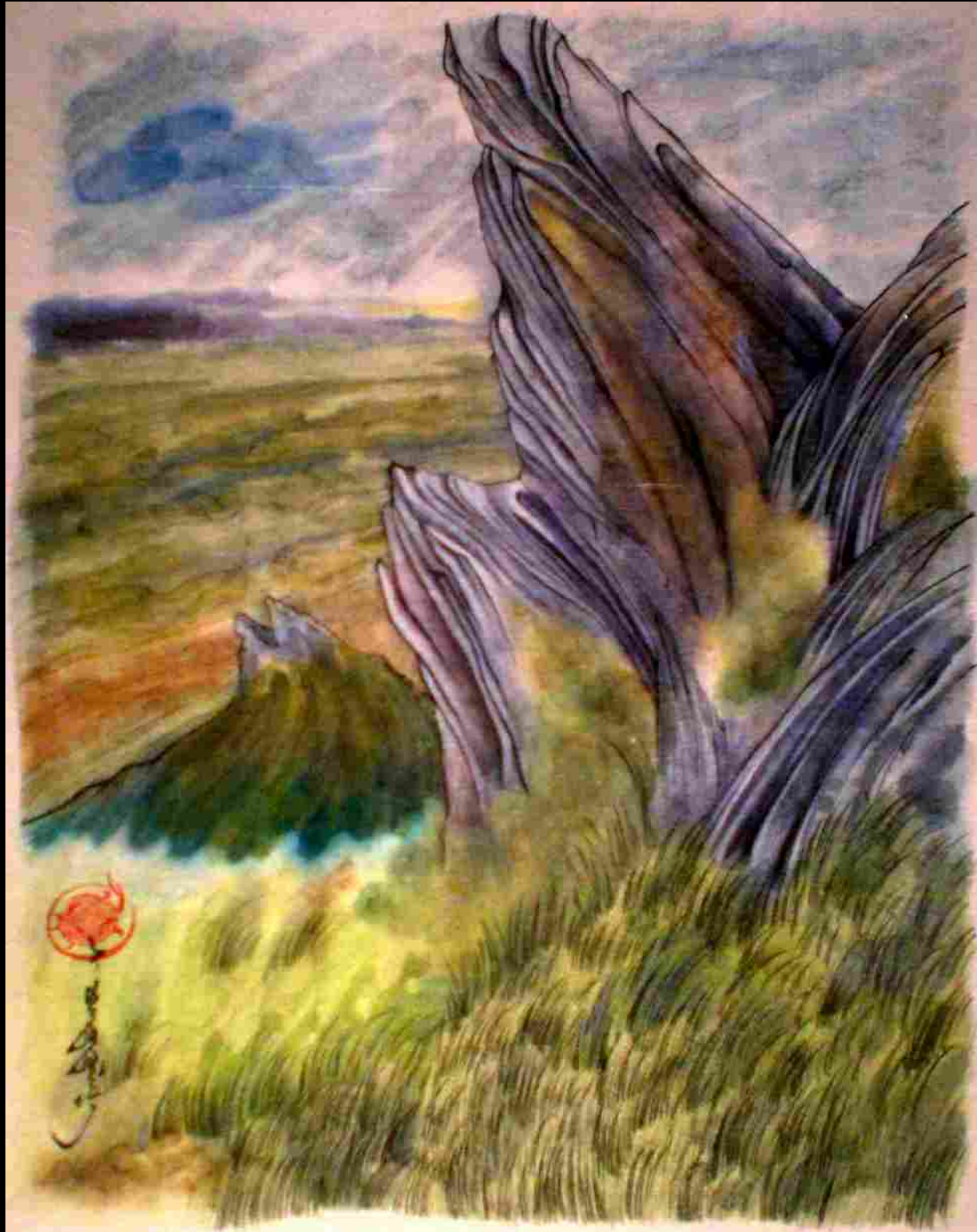


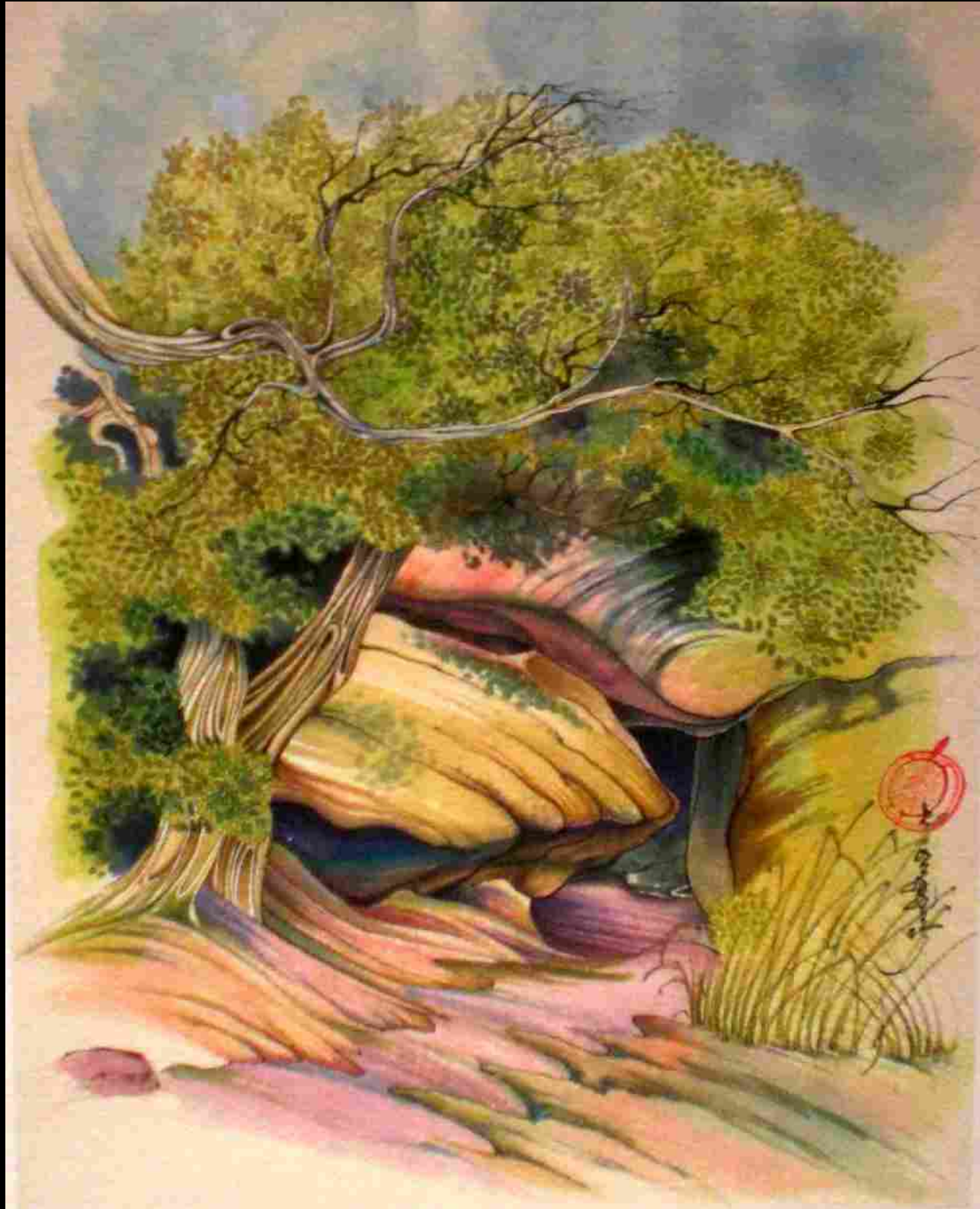


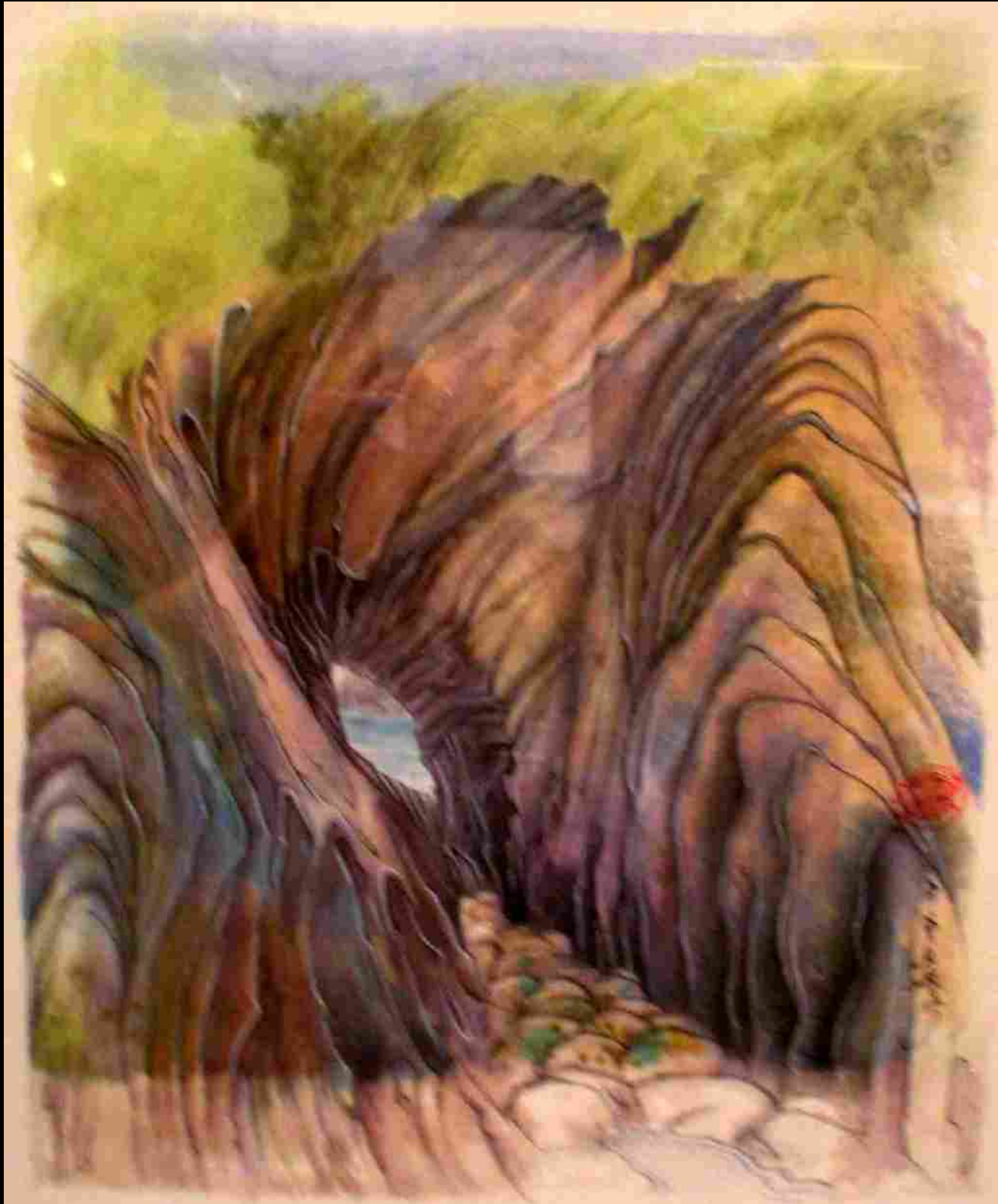




Handwritten signature or text in black ink, possibly reading 'L. B. ...'.

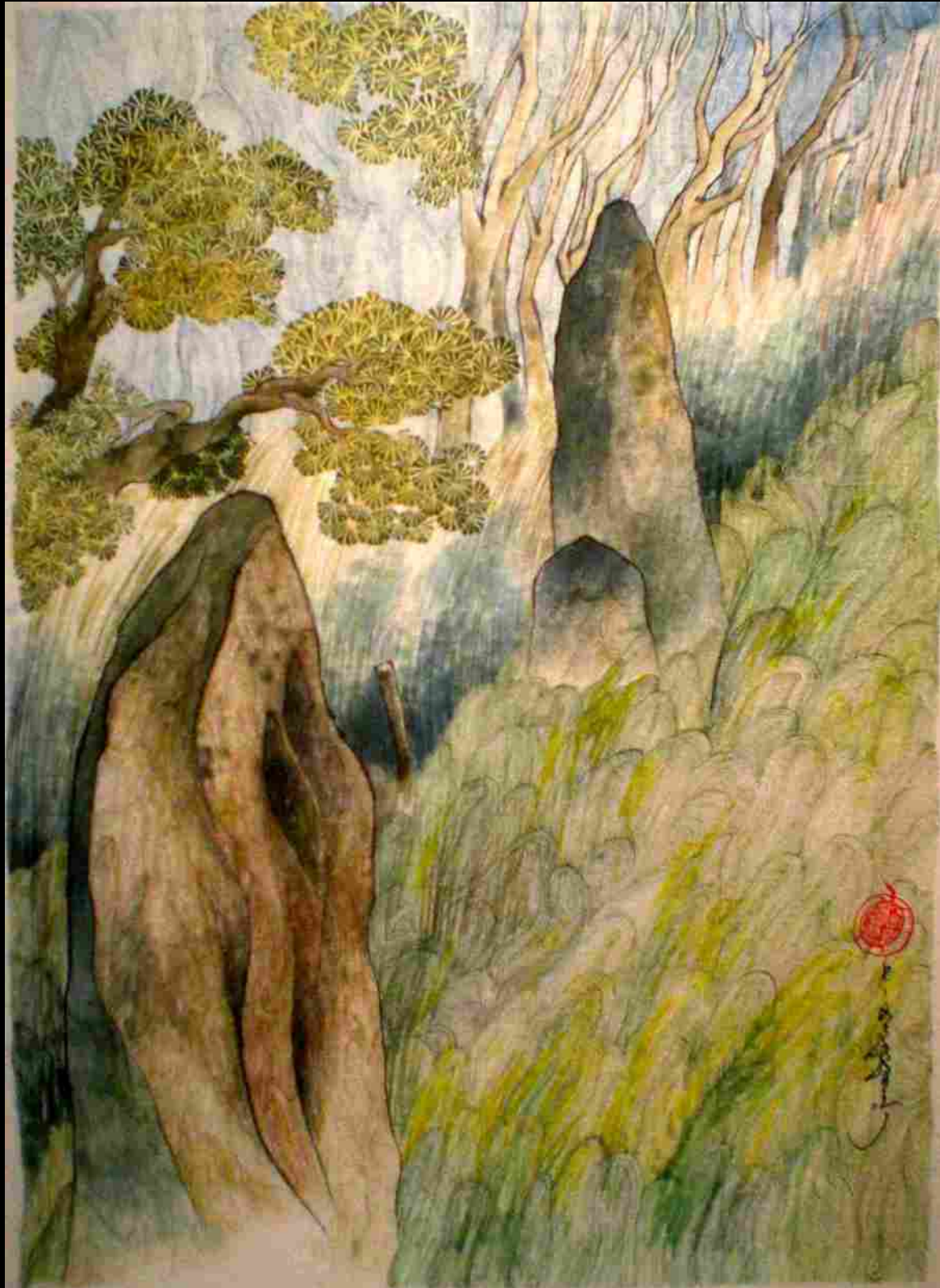
















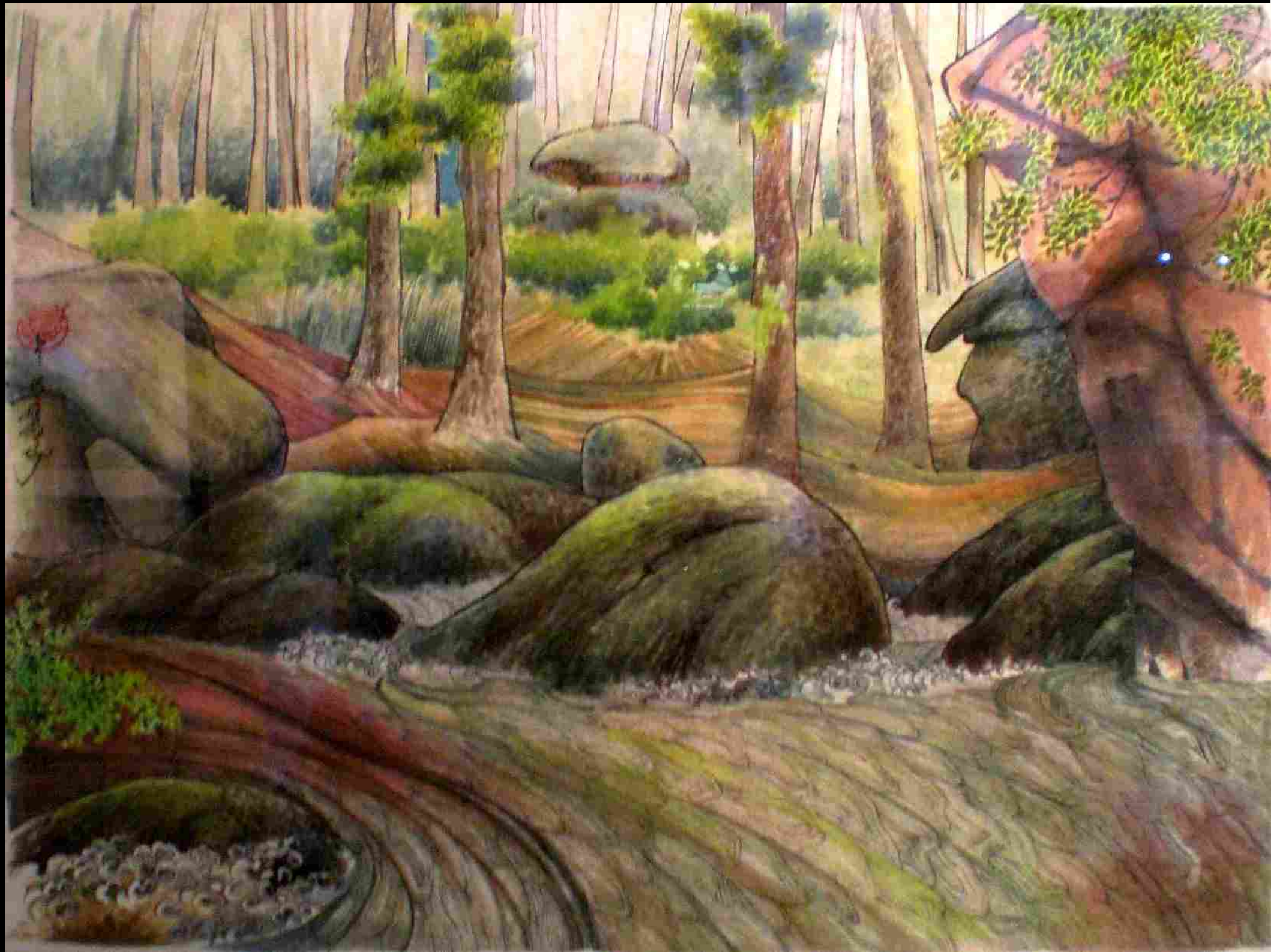



C. S. ...















Red seal impression above vertical calligraphy.



Red seal and vertical calligraphy.







蟹
图



Small vertical text or signature, possibly in Chinese characters, located below the red seal.

